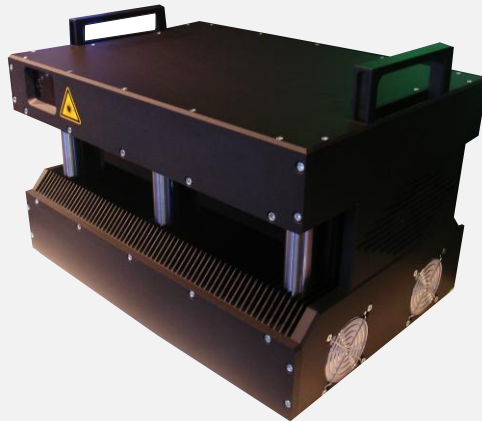
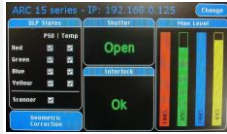


# ARCTOS – COHERENT (100% OPSP) Showlaser Series



**Laser Sources:** 100% Coherent® Taipan® OPSP Technology: Arctos technical superiority has been rewarded with the professional Coherent Integrator Status 2009. Arctos OPSP original laser driver: DLP 40T incl. ESD protected stabilized switching power supplies. Active super silent AIR cooling. Levitated optical construction. On request: internal liquid cooling as option for high-surround-t°.

## ARC STANDARD OPSP Laser Color /nm:



**With digital control display:**

- RED:** 639nm Coherent® OPSP
- GREEN:** 530nm Coherent® OPSP
- BLUE:** 460nm Coherent® OPSP (also available Cyan 488nm and/or Cyan 480nm)
- YELLOW:** 577nm Coherent® OPSP (also available Orange 607nm)

**SCANNERS:** Cambridge Technology. CT 6800; CT 6215; **NEW!** 8330K. Arctos original scanner driver.

**ARCTOS:** Made in Germany/ Bavaria. System Warranty: 5000h/12month what appears first. 24h professional SERVICE

## Following OPS Laser Power constellations available:

RED 639nm	GREEN 530nm	BLUE 460nm	ORANGE 607nm	YELLOW 577nm	CYAN I 488nm	CYAN II 480nm
1,0W	3,0W	1,0W	1,25W	3,0W	3,0W	1,0W
1,5W	5,0W	2,0W		5,0W	5,0W	2,0W
2,0W	8,0W			6,0W		4,0W
2,5W	10W					

all ARCTOS - OPS LASERS are specified **by TRUE LASERPOWER OUTPUT** - Coherent original specifications  
no unrealistic max-current data: **only TRUE LASERPOWER values**

**ARC'S** **ARC**

### 10-11W RGB

R 639nm 2,0W (1x2W)  
G 530nm 6,0W (1x6W)  
B 460nm 2,0W (1x2W)

*individual color/W combination on request*

**ARC'S** **ARC**

### 14-15W RGB

R 639nm 5,0W (2x2,5W)  
G 530nm 8,0W (1x8W)  
B 460nm 2,0W (1x2W)

*individual color/W combination on request*

**ARC'S** **ARC Aureus**

### 15-16W RGBY

R 639nm 2,0W (1x2W)  
G 530nm 8,0W (1x8W)  
B 460nm 2,0W (1x2W)  
Y 577nm 3,0W (1x3W)

*individual color/W combination on request*

**ARC'S** **ARC Aureus**

### 17-18W RGBY

R 639nm 2,0W (1x2W)  
G 530nm 8W (1x8W)  
B 460nm 2,0W (1x2W)  
Y 577nm 5,0W (1x5W)

*individual color/W combination on request*

**ARC'S** **ARC Aureus**

### 19-20W RGBY

R 639nm 4,0W (2x2W)  
G 530nm 8,0W (1x8W)  
B 460nm 4,0W (2x2W)  
Y 577nm 3,0W (1x3W)

*individual color/W combination on request*

**ARC'S** **ARC Aureus**

### 23-24W RGBY

R 639nm 5,0W (2x2,5W)  
G 530nm 8W (1x8W)  
B 460nm 4,0W (2x2W)  
Y 577nm 6,0W (1x6W)

*individual color/W combination on request*

## ARCTOS – COHERENT (100% OPSSL) Showlaser Series

coherent **ARC** Aureus

THE LUXURY OF GOLD LASERPOWER



COHERENT ARC AUREUS		RGBY OPSSL BEAM SOURCES		[ 5W   10W   15W   20W   30W   50W   75W ]*
639 nm RED	Coherent OPSSL	2,0 W	1,0 W / 1,5 W / 2,0 W / 2,5 W	
530 nm GREEN	Coherent OPSSL	8,0 W	3,0 W / 5,0 W / 8,0 W / 10,0 W	
460 nm BLUE	Coherent OPSSL	2,0 W	1,0 W / 2,0 W	
480 nm BLUE*	Coherent OPSSL		1,0 W / 2,0 W / 4,0 W	
488 nm BLUE*	Coherent OPSSL		3,0 W / 5,0 W	
577 nm YELLOW	Coherent Genesis Taipan OPSSL	5,0 W	3,0 W / 5,0 W / 6,0 W	
607 nm ORANGE*	Coherent OPSSL		1,25 W	



Height: 303mm

Length: 503mm



Width: 348mm



Weight: 65 kg

\* Dimensions with feet

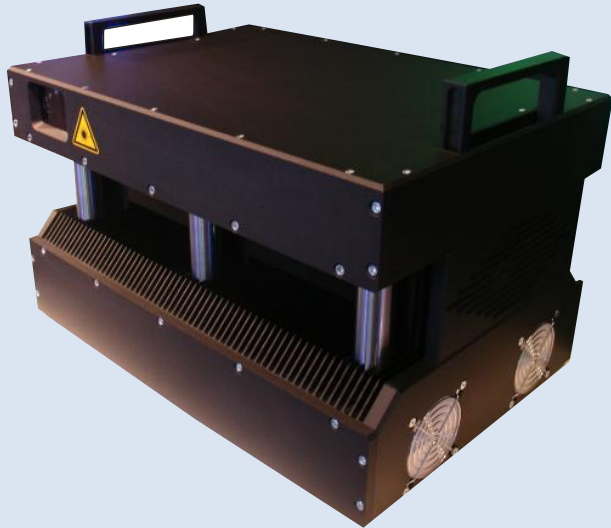
**Innovative cooling:** Air and/or liquid cooled for top performance  
 Intelligent t° - Thermal management system  
 Special design for fixed-installations

**Compact Dimensions:** Length: 503mm Width: 348mm Height: 303mm

Analog modulation: 0-5V up to 100 kHz  
 Power consumption: 110 - 265 VAC  
 Signal input/ output: ILDA standard  
 Scanner: Cambridge Technology 6800 / 6215 / **8330K NEW!**  
 ARCTOS® solid: Dustproof housing + maintenance-free sealed optical module  
 Ultra rugged, compact and reliable

\* Available Coherent laser modules! Individual Design on request!

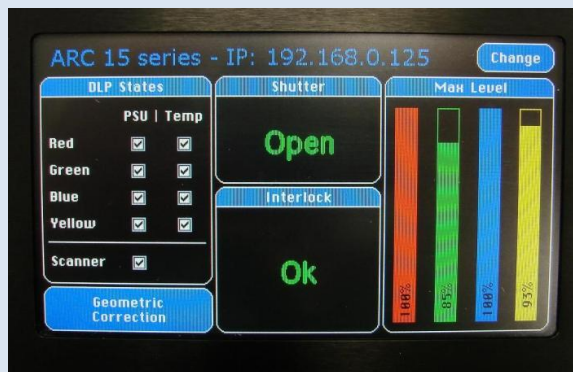
ARC-Coherent Frontside:



ARC-Coherent Backside:



ARC-Coherent Digital Control-Display:



# "ARC COHERENT" SYSTEM DESIGN:

**FRONT**



**BACKSIDE**

